

FlyPad

Connect FlyPad with your PC

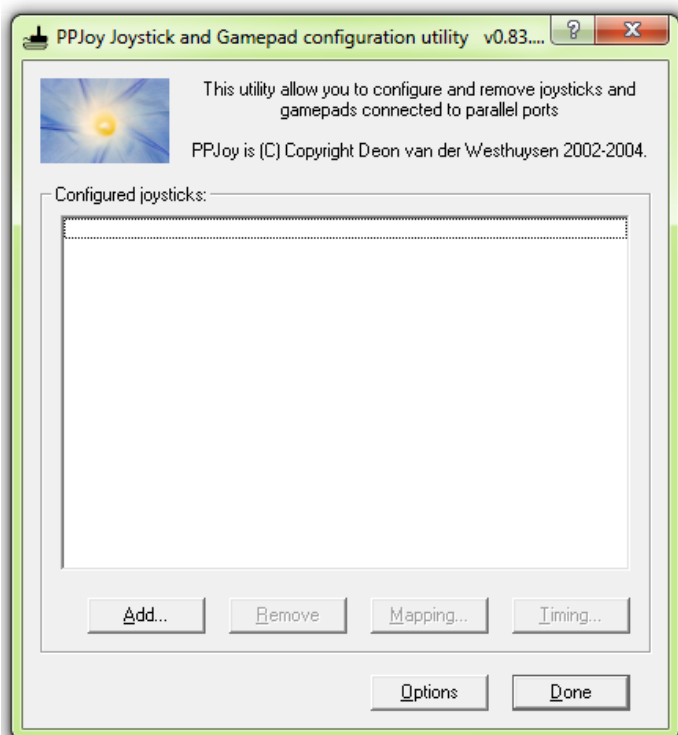
In order to play PC games and to fly plane with your simulator you have to install a driver to your computer. The driver is called SmartPropoPlus and it allows you to use your own transmitter, or in this case FlyPad, as a joystick for PC. You will need also a driver called PPJoy.

STEP 1: Download and install PPJoy

- 1.1 Download PPJoy from the PPJoy site ([32bit](#) | [64bit](#))
- 1.2 Install PPJoy and follow the instructions carefully

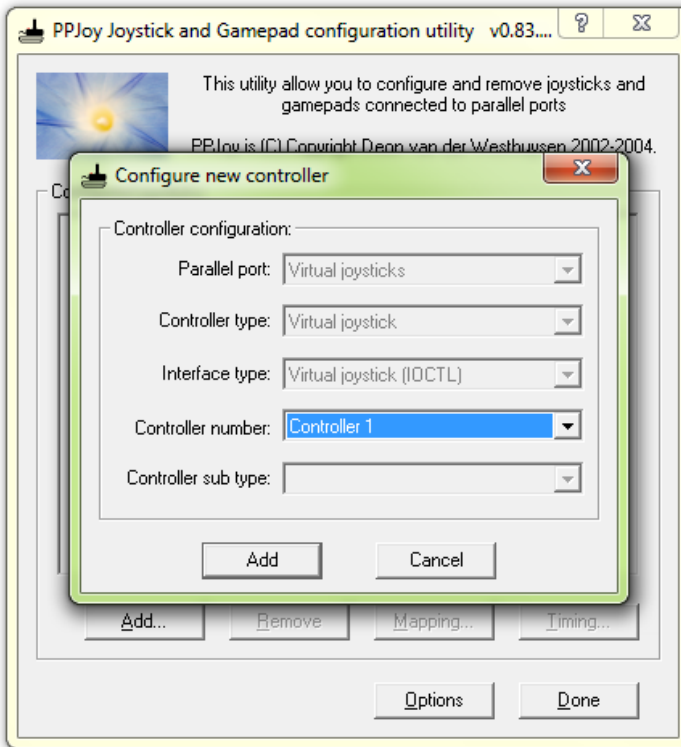
STEP 2: Configure PPJoy

- 2.1 Open control panel and double click Parallel Port Joysticks icon



- 2.2 Click Add...

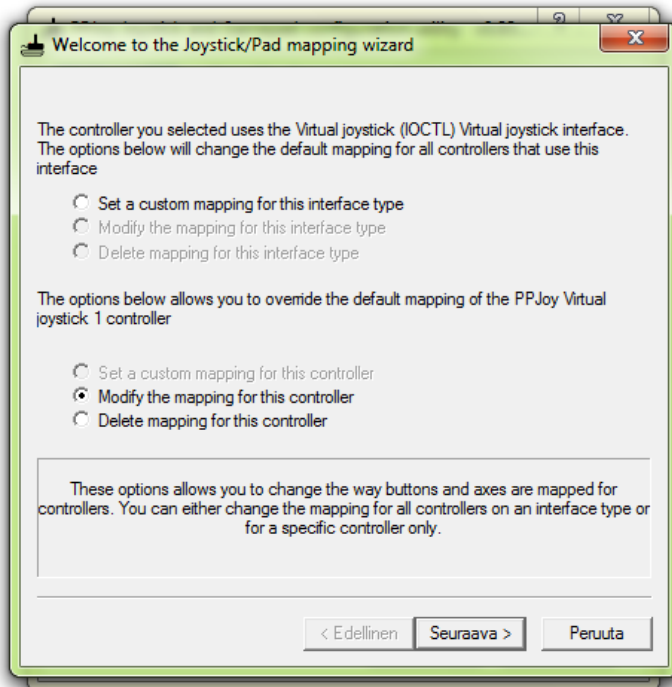
2.3 Modify the dialog like this



2.4 Click Add

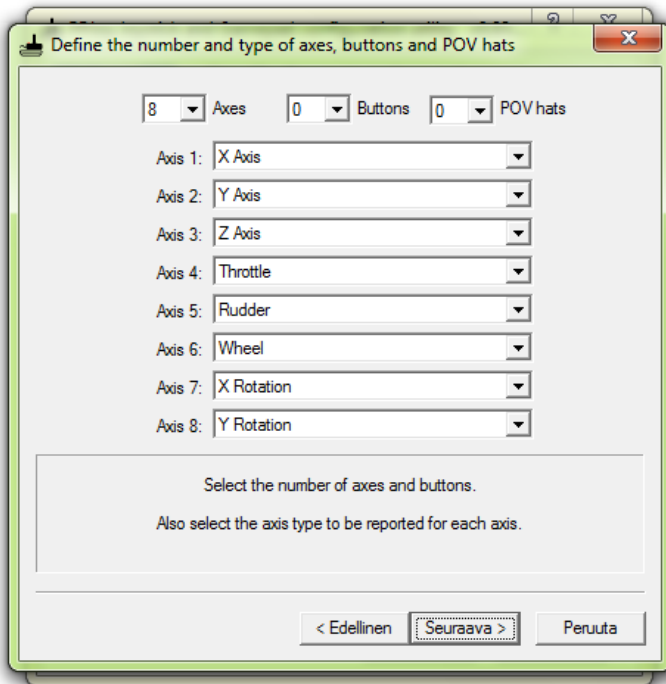
2.5 Select PPJoy Virtual joystick 1 from the list and click Mapping.... If you get an error message please wait while windows is installing the driver.

2.6 Modify the dialog like this



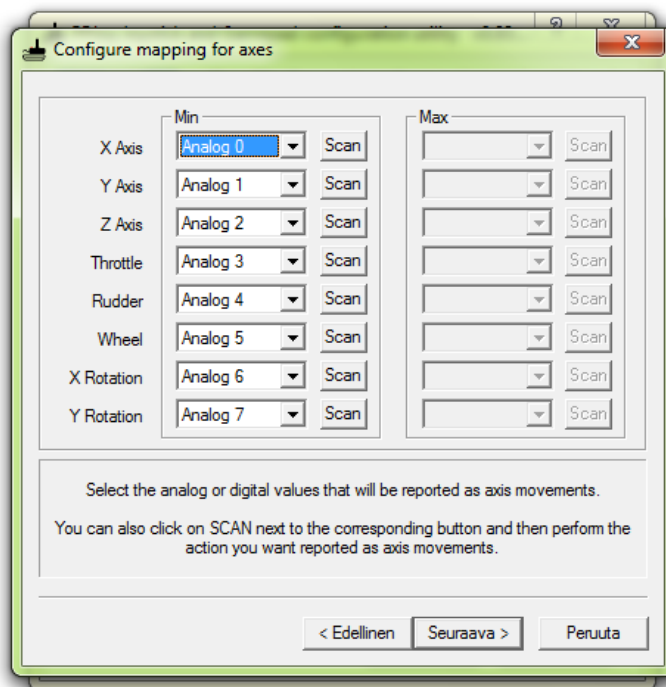
2.7 Click Next >

2.8 Modify the dialog like this:

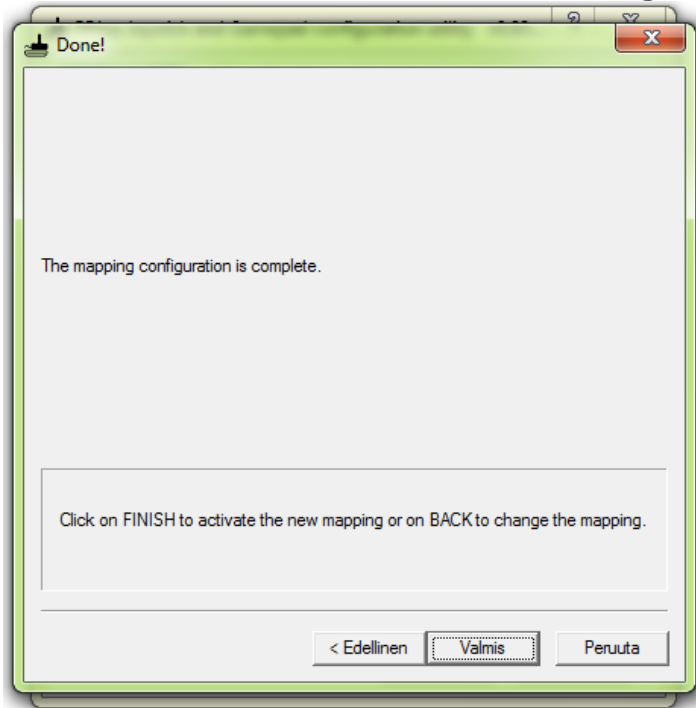


2.9 Click Next>

2.10 Modify the dialog like this:



2.11 Click Next > and click Next > again



STEP 3: Download and install generic SmartPropoPlus

- 3.1 [Download SmartPropoPlus](#)
- 3.2 Run the installer and follow these instructions:
[Install Generic SmartPropoPlus](#)
- 3.3 Connect FlyPad to your PC. You will need only stereo/mono audio cable with 3.5mm jack. There is [connecting instructions](#)
- 3.4 Make sure that your audio source is configured: [Audio source configuration](#)
- 3.5 Make sure that modulation type is PPM(generic) and Shift Polarity is Auto-detect
- 3.6 Calibrate your controller by following [these instructions](#)

You are now ready to play your favorite games or fly plane in simulator with FlyPad.

If you have problems you can find more information from SmartPropoPlus website: <http://www.smartpropoplus.com> or ask us via email: mikko93@gmail.com